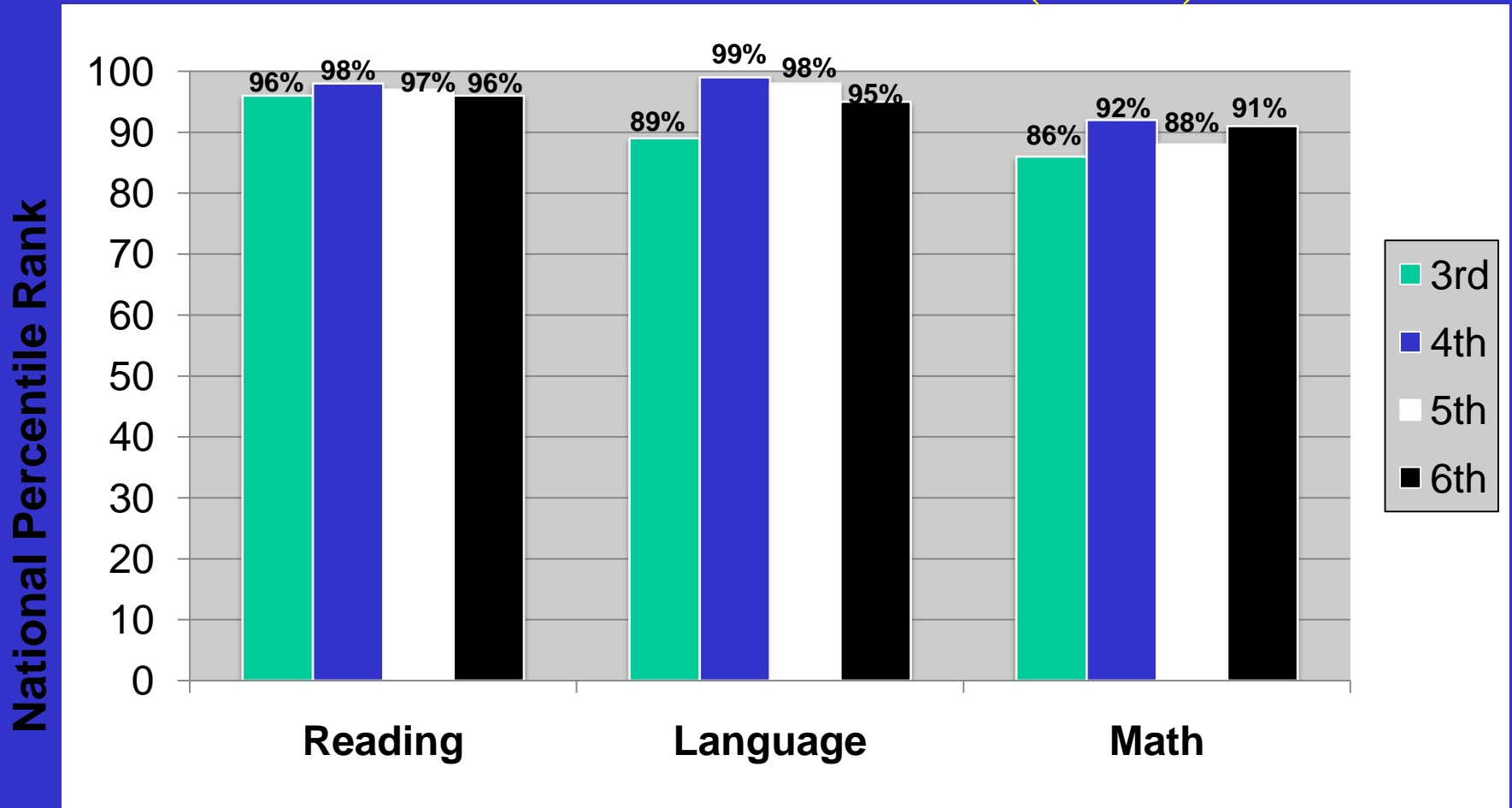


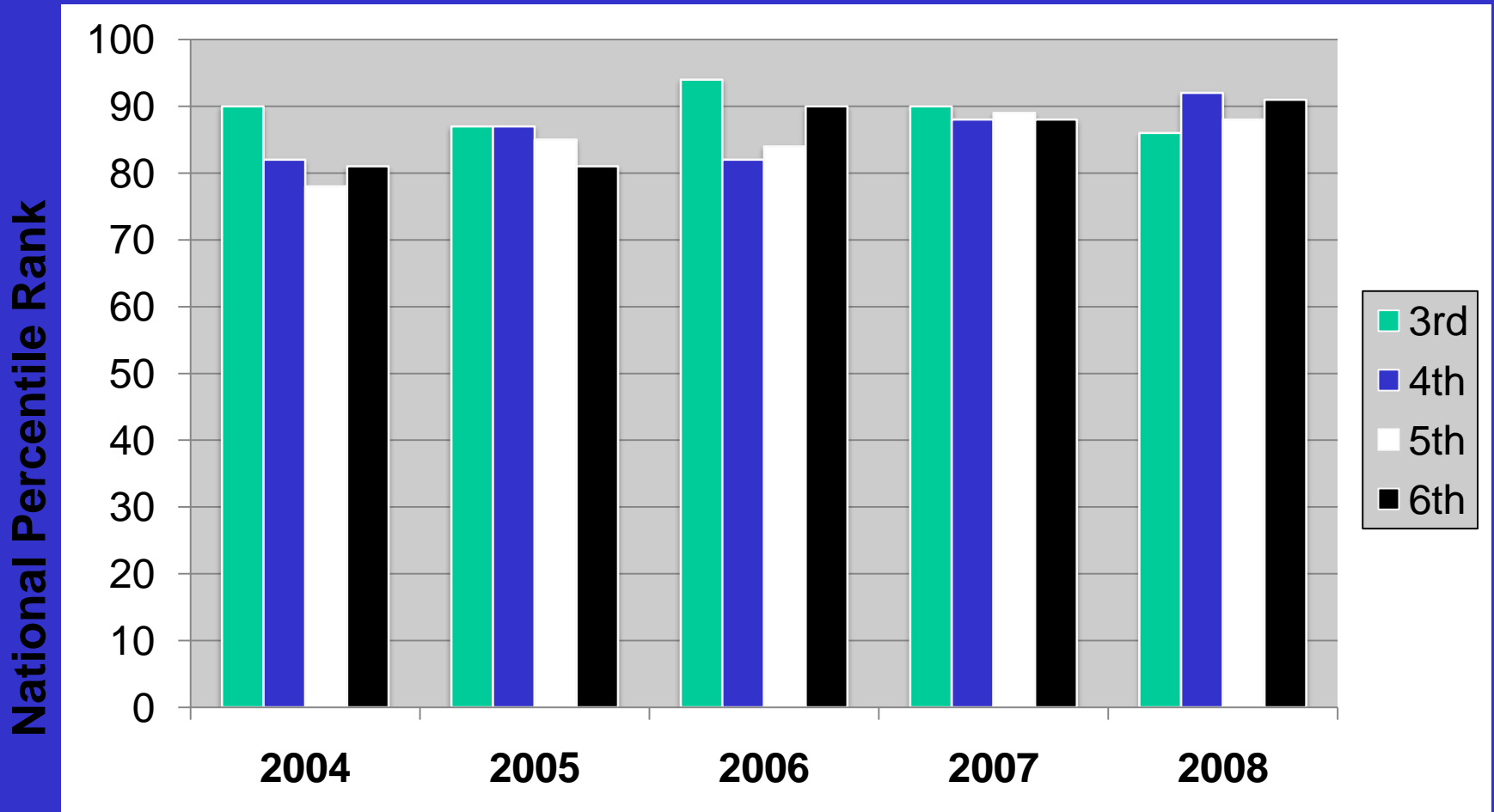
Bellevue Christian School Elementary Standardized Test Scores for 2008 IOWA Test of Basic Skills (ITBS)



Percentile Rank: A score in the 50th percentile indicates that BCS students performed better than 50% of students at other schools in the country who took the test. A score at the 50th percentile means that the students are performing at grade level.

Bellevue Christian School students perform well above grade level on all standardized measures.

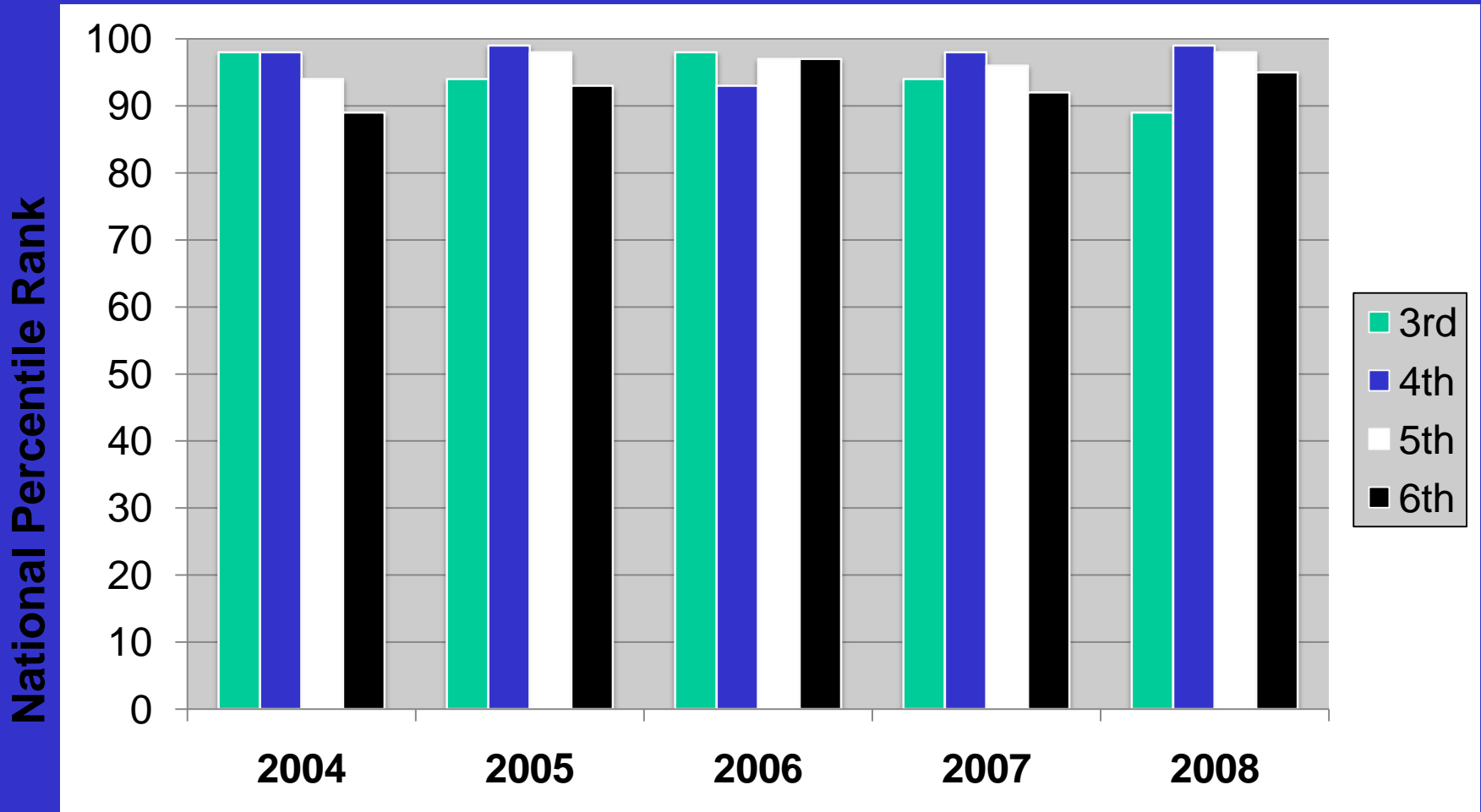
Bellevue Christian School Elementary Standardized MATH Test Scores IOWA Test of Basic Skills (ITBS)



Percentile Rank: A score in the 50th percentile indicates that BCS students performed better than 50% of students at other schools in the country who took the test. A score at the 50th percentile means that the students are performing at grade level.

Bellevue Christian School students perform well above grade level on all standardized measures.

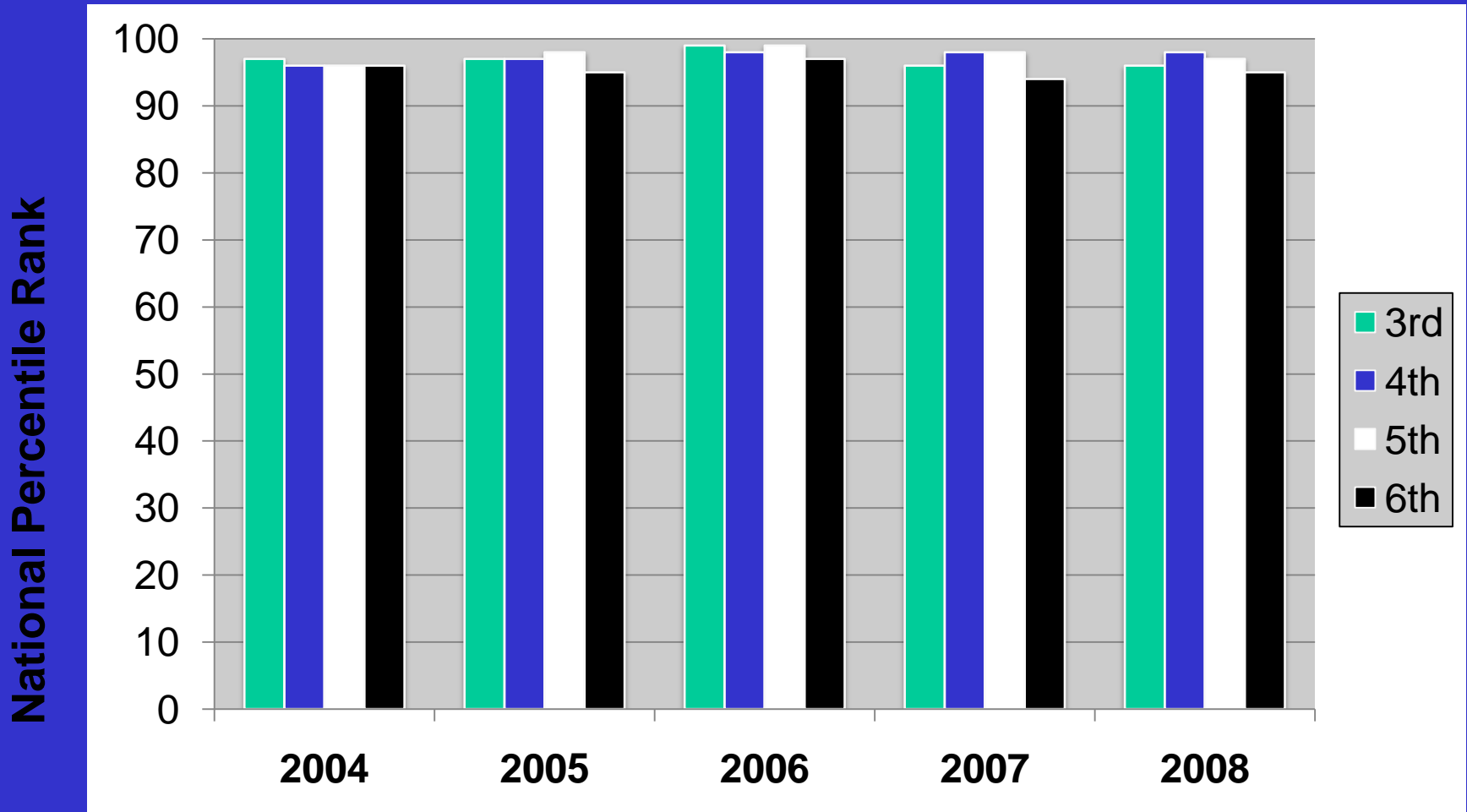
Bellevue Christian School Elementary Standardized LANGUAGE Test Scores IOWA Test of Basic Skills (ITBS)



Percentile Rank: A score in the 50th percentile indicates that BCS students performed better than 50% of students at other schools in the country who took the test. A score at the 50th percentile means that the students are performing at grade level.

Bellevue Christian School students perform well above grade level on all standardized measures.

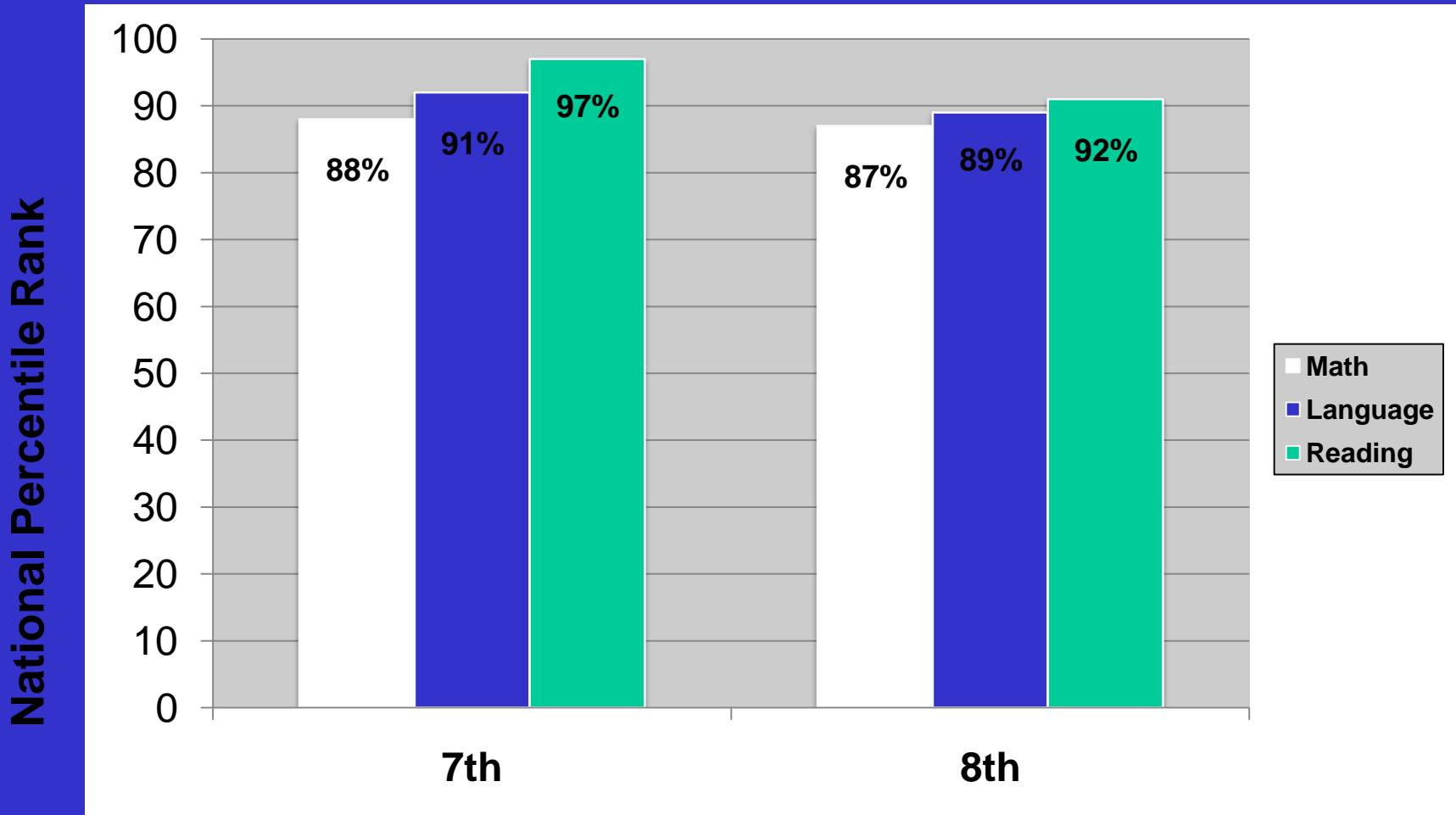
Bellevue Christian School Elementary Standardized READING Test Scores IOWA Test of Basic Skills (ITBS)



Percentile Rank: A score in the 50th percentile indicates that BCS students performed better than 50% of students at other schools in the country who took the test. A score at the 50th percentile means that the students are performing at grade level.

Bellevue Christian School students perform well above grade level on all standardized measures.

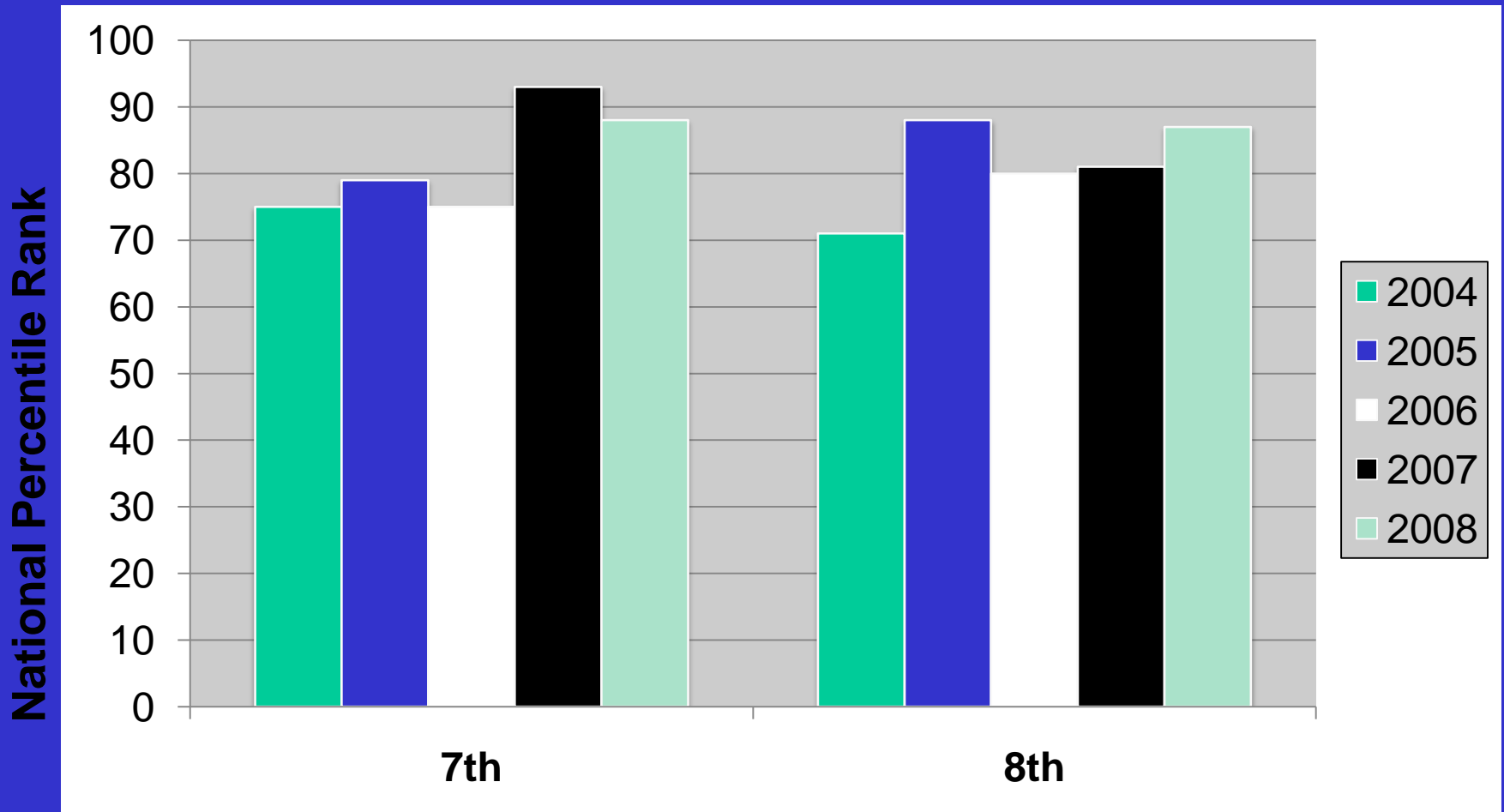
Bellevue Christian School Junior High (7-8th) Standardized Test Scores for 2008 IOWA Test of Basic Skills (ITBS)



Percentile Rank: A score in the 50th percentile indicates that BCS students performed better than 50% of students at other schools in the country who took the test. A score at the 50th percentile means that the students are performing at grade level.

Bellevue Christian School students perform well above grade level on all standardized measures.

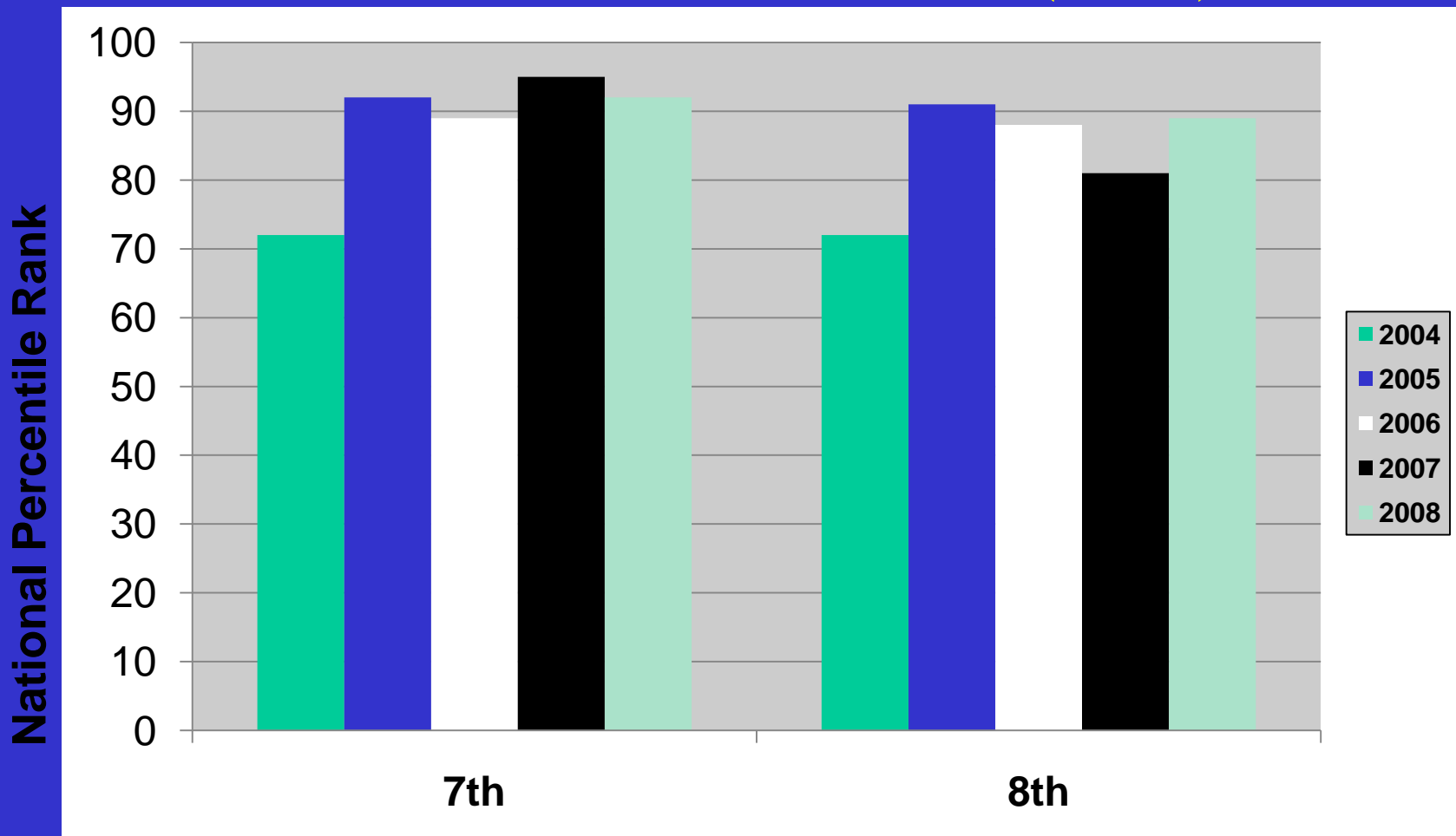
Bellevue Christian School Junior High (7-8th) Standardized MATH Test Scores IOWA Test of Basic Skills (ITBS)



Percentile Rank: A score in the 50th percentile indicates that BCS students performed better than 50% of students at other schools in the country who took the test. A score at the 50th percentile means that the students are performing at grade level.

Bellevue Christian School students perform well above grade level on all standardized measures.

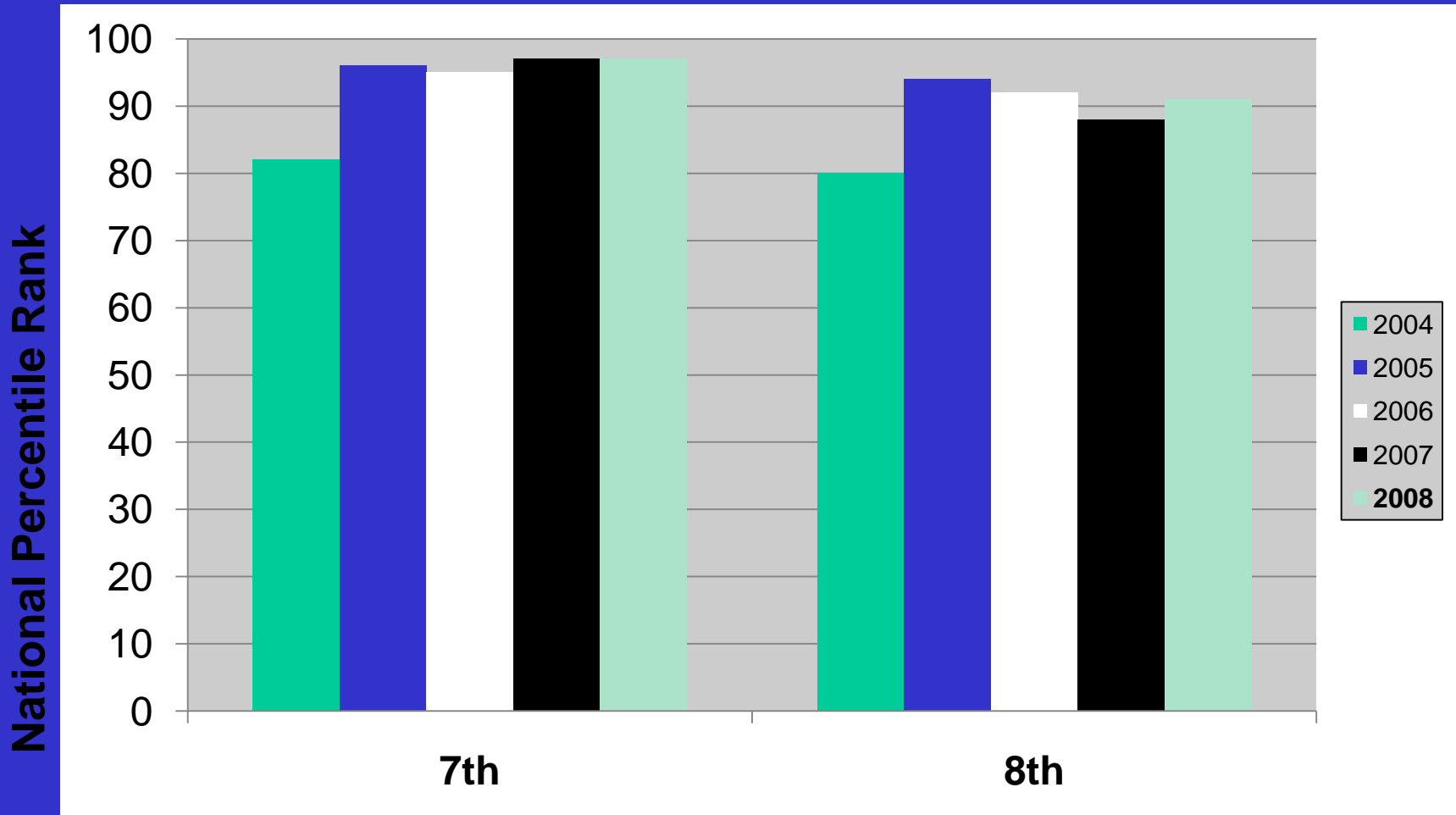
Bellevue Christian School Junior High (7-8th) Standardized LANGUAGE Test Scores IOWA Test of Basic Skills (ITBS)



Percentile Rank: A score in the 50th percentile indicates that BCS students performed better than 50% of students at other schools in the country who took the test. A score at the 50th percentile means that the students are performing at grade level.

Bellevue Christian School students perform well above grade level on all standardized measures.

Bellevue Christian School Junior High (7-8th) Standardized READING Test Scores IOWA Test of Basic Skills (ITBS)



Percentile Rank: A score in the 50th percentile indicates that BCS students performed better than 50% of students at other schools in the country who took the test. A score at the 50th percentile means that the students are performing at grade level.

Bellevue Christian School students perform well above grade level on all standardized measures.